

MONTHLY MEMBERSHIP PROGRESS REPORT

District 33 N

Results as of: 11/30/2024

GMT:

LOCATION MASSACHUSETTS

GMT CA

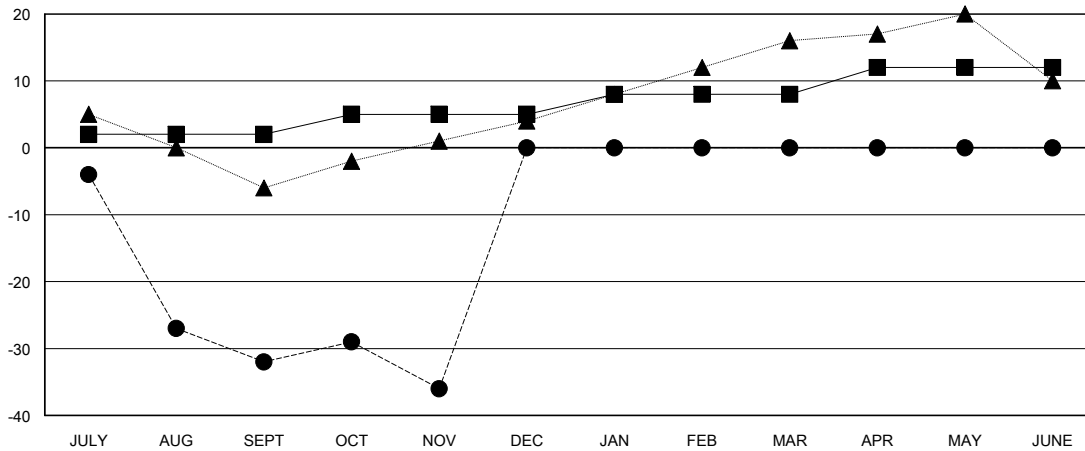
Clubs			
RESULTS FOR 2024-2025			
QUARTER	NEW CLUB GOAL	NEW CLUBS	DROPPED CLUBS
JULY/AUG/SEPT	0	0	0
OCT/NOV/DEC	1	0	0
JAN/FEB/MAR	0	0	0
APR/MAY/JUNE	0	0	0

Members			
RESULTS FOR 2024-2025			
QUARTER	MEMBER GROWTH NET GOAL	MEMBER GROWTH ACTUAL	DROPPED MEMBERS ACTUAL (including transfers)
JULY/AUG/SEPT	2	13	40
OCT/NOV/DEC	3	17	18
JAN/FEB/MAR	3	0	0
APR/MAY/JUNE	4	0	0

GOALS AND ACTUAL NEW CLUBS CUMULATIVE



GOALS AND ACTUAL MEMBERS CUMULATIVE



DROPPED CLUBS: 0	11 CLUBS OF 39 ADDED 1 OR MORE NEW MEMBERS	GENDER DISTRIBUTION MALE 625 (58.63%) FEMALE 441 (41.37%)
DROPPED MEMBERS DECEASED 7 CLUB CANCELLED 0 OTHER 50 TOTAL 57	CLICK HERE FOR CUMULATIVE MEMBERSHIP DATA	TOTAL FAMILY UNIT MEMBERS 0 FAMILY MEMBERS PAYING HALF DUES 0